

## CLASS REQUIREMENTS

Class: **Creating A Realistic Landscape**

Dates: **Thurs/Fri/Sat/Sun April 12 -15**

Tutor: **Kay Haerland**

Classroom: **5**

**You must bring along the following:**

**Please read carefully and bring everything on this list (except Optional items of course). You will be working on a landscape quilt approx 50cm x 40 cm in size using one of Kay's patterns.**

### Fabrics:

- Before arriving at the class, please prepare four pieces of plain white cotton and one piece plain medium blue cotton (all of them A4 size), each ironed onto medium-to-heavy weight (not floppy) stabilizer.
- A small selection of fabric pieces you want to use (see guide). Don't pick fabric with strong, clearly recognizable patterns like checks, circles, straight lines etc. The size of the pieces should be approx 60x20cm (some of them can be smaller still). Keep in mind that you need the colours you see around you in nature, flecked or shaded in greys, blue-greys, purple, greens of all shades and intensities, browns, orange, ochre etc. Good choices are batiks, shaded hand dyed or fabrics that look textured with big and small shapes. Include sky fabric, and some fabric with leaves, grass, rocks and flowers. Attached is a guide sheet with some examples of the kinds of patterns and gradations Kay uses. They are black and white copies, but just imagine them in all kinds of 'nature colours' (I will bring some sky and water fabrics).
- 30x40cm of very fine soft bridal veil black tulle (not stiff netting) – Lincraft have it

### Threads:

- Standard machine sewing threads in white and in nature colours: - greens, brown, light blue, medium, light and dark grey, black etc.
- 1 spool of thin, clear monofilament thread (Kay recommends YLI wonder invisible thread, - Madeira is also good).
- A couple of bright rayon threads (such as red, yellow or purple)
- One silver metallic (optional)

### Other Items:

- Machine needles – Microtex Sharp Needle 70/10 plus what you normally use
- One small sheet of water-soluble stabilizer (Romeo or HEAVY Ultra-Solvly), or if you have a thinner stabilizer, bring a 7" hoop to use with your machine.
- ½ m Vliesofix, ½ m freezer paper (Reynolds brand is good) and ½m baking paper
- One sheet plain paper (55x45 cm) thin enough to copy the master pattern.
- 1 sheet medium-to-heavy Tearaway (55cm x 45 cm) - not floppy
- Fabric scissors, paper scissors, small sharp scissors, straight pins.
- Notebook, pencil, pen, ruler, medium black permanent marker pen.
- A satay stick or cuticle stick
- An empty margarine container with lid
- 1 pair disposable gloves
- Feel free to bring your camera.

Continued overleaf ...

**Kit fee:** A kit is provided for this class at a cost of **\$12**.

Please ensure that you bring the **exact** amount in cash in an envelope with your name and the tutor's and class name on the front, to be given to the tutor before the class starts.

Kit consists of:

- Class notes and use of shared materials, including paints and embellishments.

**Sewing machines** will be provided by sponsor companies so you don't need to bring your own.

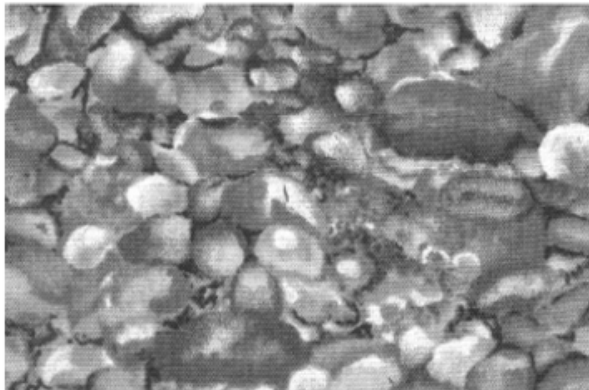
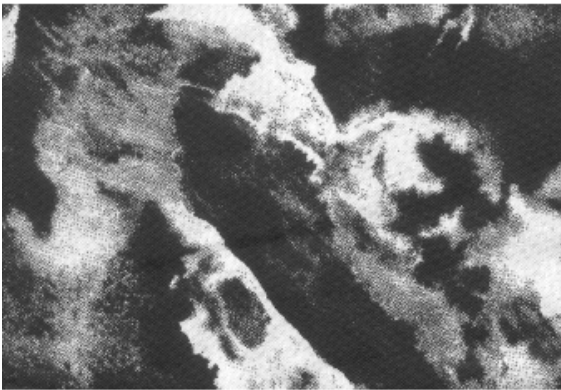
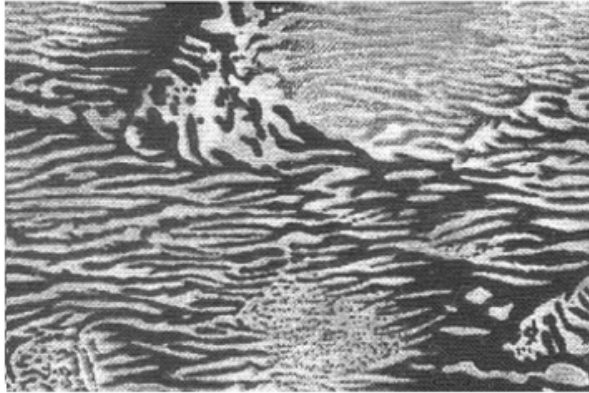
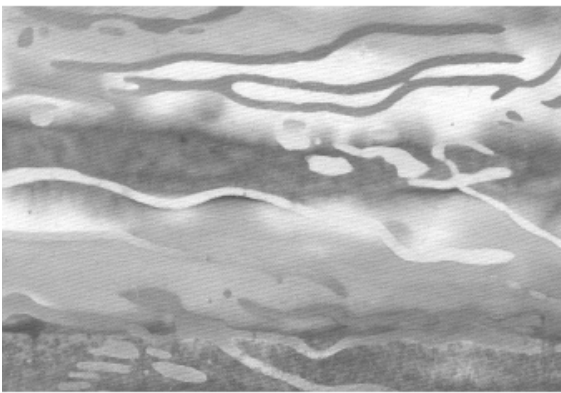
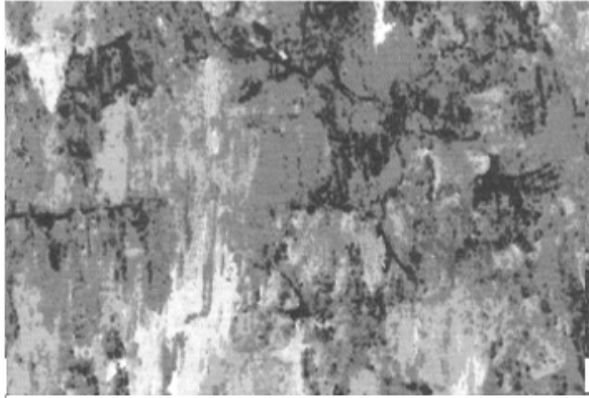
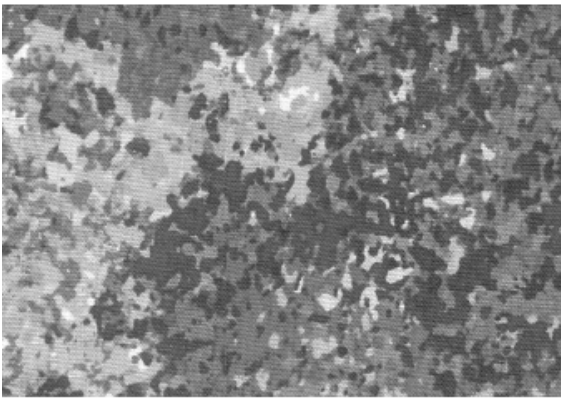
A technical assistant from that company will be available to assist any students who are unfamiliar with that machine. **If you prefer to bring your own sewing machine**, you may, but please ensure it is well maintained and that you bring the instruction manual and accessories.

Also **bring your open-toe embroidery foot**, and you will also need an **open-toe darning foot (if you have one) for free motion work**, but a regular darning foot is OK.

Suggestions:

- Please make sure you label everything with your name.
- We also recommend bringing a cushion in case your chair doesn't suit your height.
- A water bottle helps you stay hydrated.
- Don't forget to bring your glasses.

**Fabric guide: Samples Sheet**



© Kay Haerland